

## Notices to Mariners, SWEDEN Swedish Maritime Administration



### Areas in Swedish Notices to Mariners



**SJÖFARTSVERKET**

Editorial office  
Swedish Maritime Administration  
Ufs  
601 78 NORRKÖPING  
Sweden  
tel: 0771 630 605  
e-mail: [ufs@sjofartsverket.se](mailto:ufs@sjofartsverket.se)  
Publisher:  
Hydrographer Patrik Wiberg



## ANNOUNCEMENTS

\* 15509 (T)

### Wintertime recommendations for maritime traffic for the prevention of ice-skating accidents etc.

The following recommendations have been drafted in order to prevent accidents for ice-skaters and others who make use of ice-covered waters for transportation and/or recreation due to ice having been broken.

The guidelines are also intended to limit the risk of persons being cut-off from the ability of reaching shore safely.

#### Follow the fairways and pay attention

Ships should, when transiting ice-covered waters, as far as possible, make use of charted fairways or the unofficial routes used by local passenger boats and islanders.

If you see persons on the ice in vicinity of your planned route you should ensure that ice is not broken up at their location or that a channel cut through the ice does not prevent these people from reaching shore safely.

#### Speed restrictions and bans on breaking ice

In order to ensure that ice is not broken - which would render it impossible to be used for transportation - waters may be closed to navigation or speed restrictions may apply at certain locations during the winter. Information on such restrictions will be published in Swedish NtM.

#### Cautions be considered before breaking a channel through the ice

Transiting ice-covered waters near shore and in archipelagos require detailed route planning. If possible, follow the fairways as mentioned or existing channels through the ice. Before breaking a new channel you should ascertain local conditions and ensure that you are not cutting off connection to the mainland for islanders.

#### Inform the public before breaking a new channel through the ice

Radio Sweden P4 - Sveriges Radio P4 - Trafikredaktionen

Send an e-mail to [trafiken@sverigesradio.se](mailto:trafiken@sverigesradio.se) with information on when and where the ice will or has been broken.

State detailed information about the location, name of the vessel and contact details.

Follow up by calling +46 20 999 444 or +46 8 784 50 00, making reference to your e-mail.

Information will be broadcast on channel P4 during weekdays 0900-1800 LT and will additionally be published on the website <https://sverigesradio.se/sida/trafiken/>

Skridskonätet

Send an e-mail to [fartyg@skridsko.net](mailto:fartyg@skridsko.net). The contents of the e-mail will automatically be published on the website [www.skridsko.net/mail/fartyg/](http://www.skridsko.net/mail/fartyg/). The e-mail should contain the following information:

Subject: Location of the channel through the ice, ex. "Mälaren. Lövhölmens-Stäket."

Text: Where/when a channel will be broken or an existing channel through the ice has been observed. If possible, enclose a map delineating the area.

Ufs A, chapter 6.5

*Sjöfartsverket, Norrköping. Publ. 15 december 2020*

## NOTICES

### Sea of Bothnia

\* 15614 (T)

Chart: 523

**Sweden. Sea of Bothnia. N of Härnösand. Ångermanälven. Sannasundet. Hemsön. Cable ferry temporarily replaced by an ordinary ferry.**

Time: Until spring 2021.

Due to the ice the cable ferry has temporarily been replaced by an ordinary ferry.

Ferry route	62-41,4N	017-59,5E
-------------	----------	-----------

Not shown in ENC.

Bsp Bottenhavet N 2019/s12

*Trafikverket, Färjerederiet. Publ. 5 februari 2021*

### Sea of Åland and Archipelago Sea

\* 15622 (T)

Chart: 536

**Sweden. Sea of Åland and Archipelago Sea. Channel 'Väddö Kanal'. Bridge 'Älmstabron'. Works.**

Time: until March 14, 2400 LT.  
 Bridge 'Älmstabron' will not open due to maintenance.

Bridge 'Älmstabron'	59-58,4N	018-48,8E
---------------------	----------	-----------

Not shown in ENC.  
 Bsp Stockholm N 2020/s21

*Sjöfartsverket. Publ. 10 februari 2021*

## Northern Baltic

\* 15589 (T)

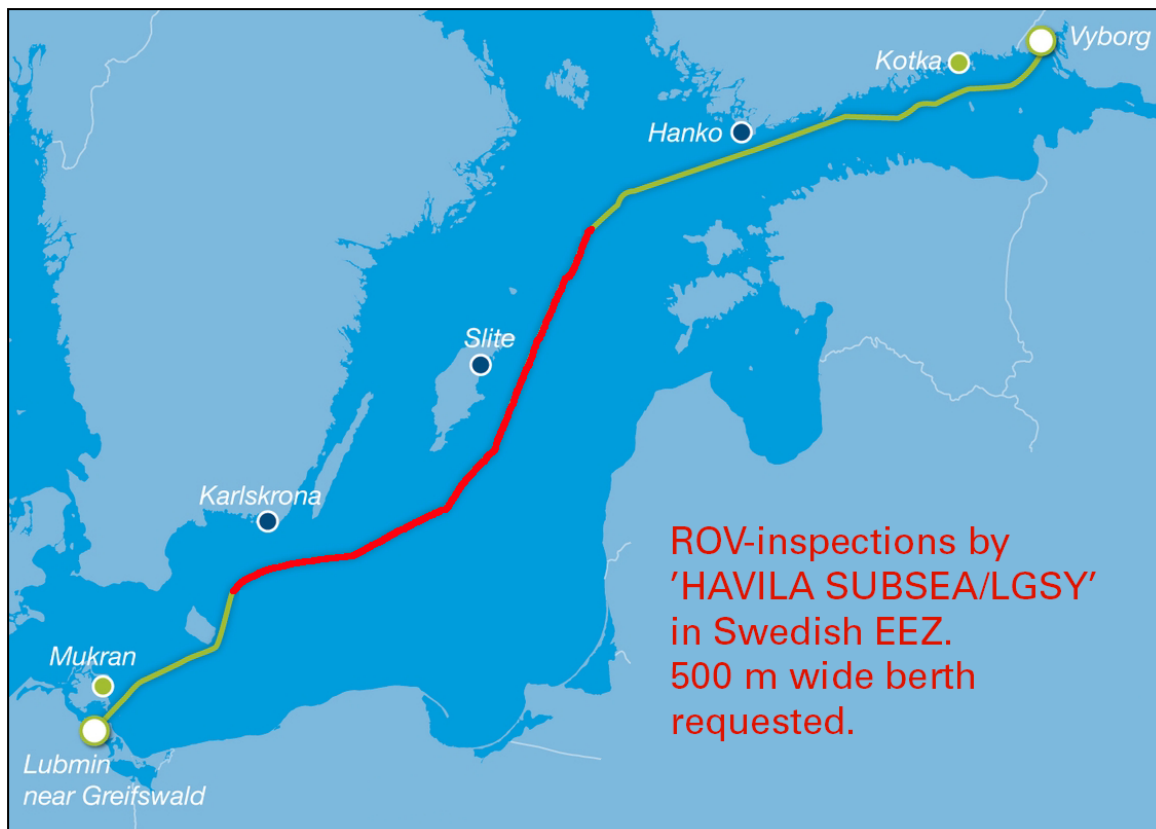
Chart: 2, 6, 61, 62, 7, 71, 731, 74, 83

**Sweden. Northern Baltic, Central Baltic, South-Eastern Baltic, Southern Baltic. Inspection of gas pipelines in Swedish waters. Vinter 2020.**

Time: Winter 2021.  
 Inspection of the Nord Stream gas pipelines in progress in SW direction in Swedish waters between given positions.  
 The works is performed by 'HAVILA SUBSEA/LGSY' and includes survey by means of ROV.  
 500 m wide berth requested.

Boundary Sweden-Finland (NE of Gotska Sandön)	a)	58-51,3N	020-28,5E
Boundary Sweden-Denmark (S of Utklippan)	b)	55-32,4N	015-42,8E

Not shown in ENC.  
 Bsp Hanöbukten 2018/s05, s07, Bsp Kalmarsund 2019/s06, s07



*Inspection of pipelines*

*Nord Stream AG. Publ. 10 februari 2021*

\* 15605 (T)

Chart: 616, 6162, 6163, 6171

**Sweden. Northern Baltic. NE of Nynäshamn. Horsfjärden. Mysingen Mälbyfjärden. Ice breaking.**

See: 2021:842/15508(T), 2021:845/15509(T)

Time: Winter 2021  
 Information from the Swedish armed forces concerning icebreaking.

During ice conditions, ice breaking will occur at irregular intervals to keep fairways open according to the route / area below.

Information: Officer on duty 010-8233000

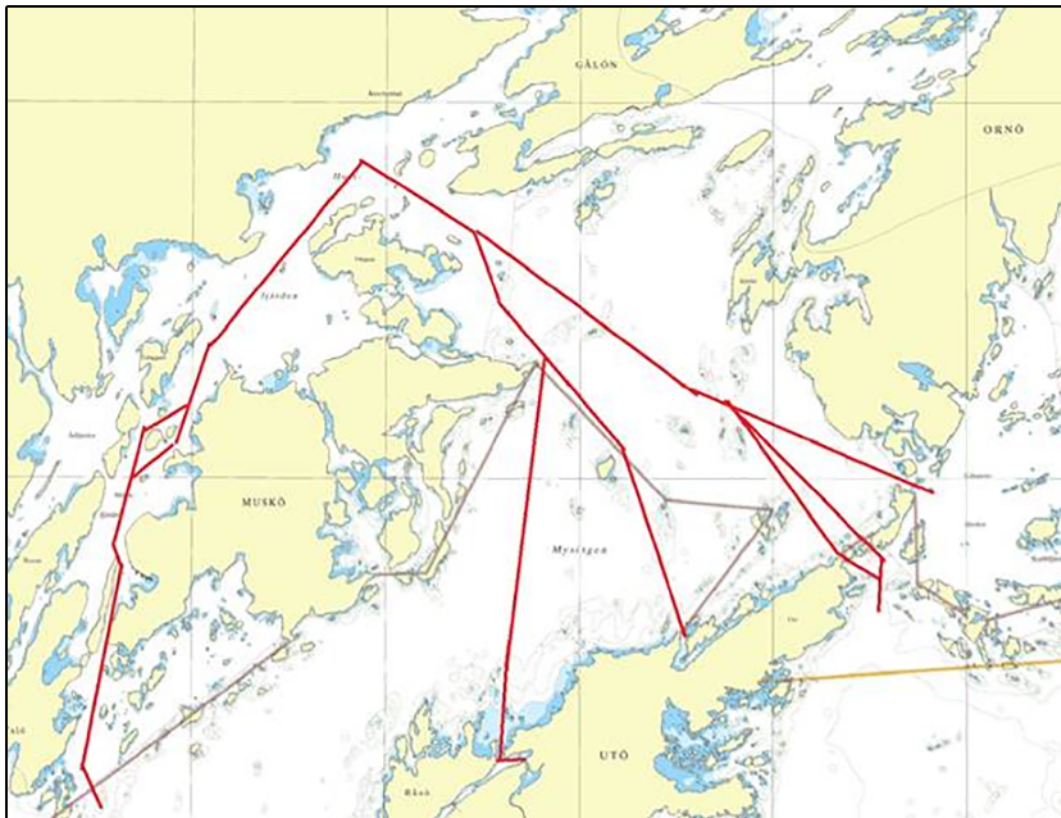
Between Berga and Utö
From Berga through Långbälingsund
Between Berga and Muskö
From Muskö through Skramsösund and further south

Horsfjärden	59-02,8N	018-07,5E
Mysingen	58-59,1N	018-14,4E
Mälbyfjärden	58-59,8N	018-03,2E

<https://www.skridsko.net/>

Not shown in ENC.

Bsp Stockholm M 2020/s43, BSP Stockholm S 2020/s08, s10, s11, s12, s13, s14, s15, s16, s17, s18, s19, s20, s34, s35, s36, s37



*Approximate positions for regular ice breaking by the Swedish armed forces*

*Försvarmakten. Publ. 9 februari 2021*

**\* 15616**

**Chart: 6141, 6142**

**Sweden. Northern Baltic. Stockholm. Bergshamra. Ålkistan. Green light buoy withdrawn.**

Delete	green light buoy Q G	59-22,53N	018-03,03E
--------	----------------------	-----------	------------

Bsp Stockholm M 2020/s08, s10, s12, s55

*Transportstyrelsen. Publ. 10 februari 2021*

**\* 15618**

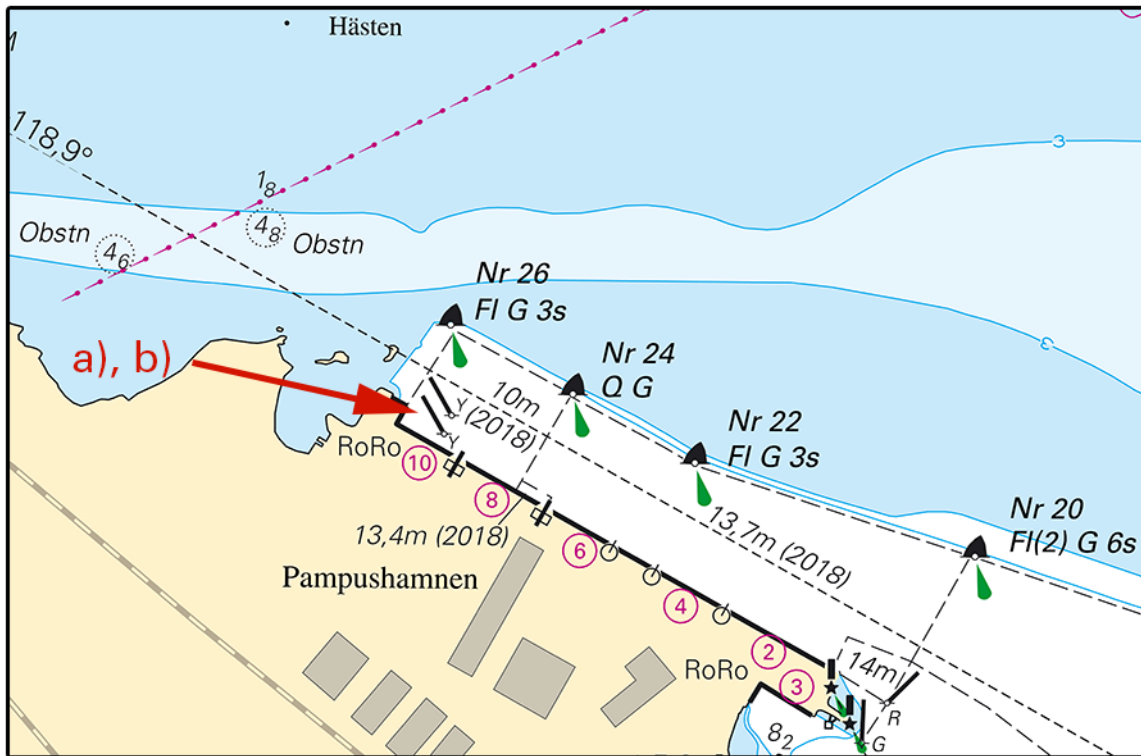
**Chart: 6212**

**Sweden. Northern Baltic. Norrköping. Pampushamnen. Buoyage.**



Insert	special mark spar buoy	a)	58-37,449N	016-14,500E
	special mark spar buoy	b)	58-37,437N	016-14,491E

Bsp Ostkusten 2019/s58, s59



Pampushammen

Transportstyrelsen. Publ. 10 februari 2021

### Lake Mälaren and Södertälje Canal

\* 15620

Chart: 6141

Sweden. Lake Mälaren and Södertälje Canal. Stockholm. Liljeholmsbron. Liljeholmsviken. Special light spar buoy.

Insert	special light spar buoy	59-18,852N	018-01,898E
Insert	special light spar buoy	59-18,839N	018-01,932E

Bsp Mälaren - Hjälmaren 2020/s51

Transportstyrelsen. Publ. 10 februari 2021

\* 15621

Chart: 113

Sweden. Lake Mälaren and Södertälje Canal. Port of Västerås. Västra hamnen. Berth 51 - 54. Maintenance work completed.

Expired notices: 2019:782/14505(T)

Berth 51 - 54 have been opened to traffic.

Berth 51 -54	59-35,25N	016-31,16E
--------------	-----------	------------

Bsp Mälaren - Hjälmaren 2020/s58

Västerås hamn. Publ. 10 februari 2021

### Kattegat

\* 13994

Chart: 1352, 92, 93, 931, 9312

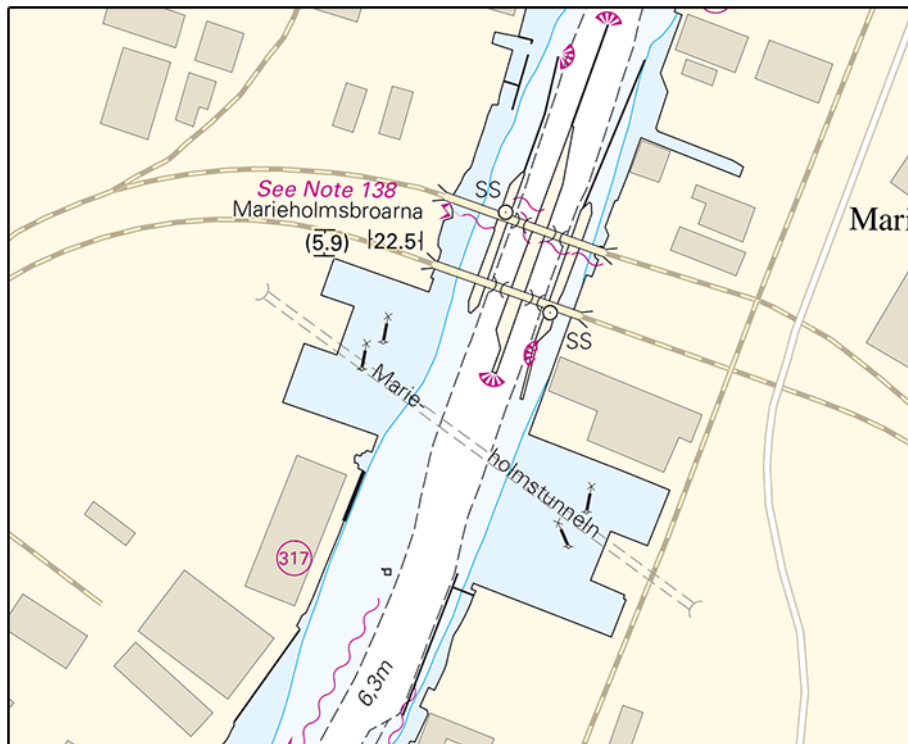
Sweden. Kattegat. Göteborg. S of Marieholmsbroarna bridges. Tunnel. Shoreline. Buoyage.

Expired notices: 2016:604/11314

The new tunnel 'Marieholmstunneln' is completed.

<b>Delete</b>	tunnel under construction between a) and b)	a)	57-43,672N	011-59,490E
		b)	57-43,606N	011-59,609E
<b>Amend</b>	shoreline between c) and j)	c)	57-43,710N	011-59,516E
		d)	57-43,726N	011-59,422E
		e)	57-43,709N	011-59,412E
		f)	57-43,701N	011-59,441E
		g)	57-43,676N	011-59,426E
		h)	57-43,682N	011-59,394E
		i)	57-43,651N	011-59,377E
		j)	57-43,634N	011-59,466E
<b>Amend</b>	shoreline between	k)	57-43,637N	011-59,611E
		l)	57-43,609N	011-59,744E
		m)	57-43,582N	011-59,724E
		n)	57-43,588N	011-59,690E
		o)	57-43,563N	011-59,672E
		p)	57-43,554N	011-59,703E
		q)	57-43,534N	011-59,691E
		r)	57-43,559N	011-59,560E
<b>Insert</b>	tunnel with name 'Marieholmstunneln' between s) - t)	s)	57-43,690N	011-59,436E
		t)	57-43,576N	011-59,683E
<b>Insert</b>	special purpose spar buoy with top mark	u)	57-43,683N	011-59,472E
<b>Insert</b>	special purpose spar buoy with top mark	v)	57-43,669N	011-59,452E
<b>Insert</b>	special purpose spar buoy with top mark	x)	57-43,597N	011-59,669E
<b>Insert</b>	special purpose spar buoy with top mark	y)	57-43,579N	011-59,652E

Bsp Göta kanal 2011/s59, Bsp Västkusten S 2019/s03, s05, s07, Trollhätte kanal - Dalslands kanal 2020/s04, s06



The tunnel Marieholmstunneln in Göteborg

Sjöfartsverket, Göteborg. Publ. 10 februari 2021

## Skagerrak

\* 15563

Chart: 9331

Sweden. Skagerrak. N of Kungshamn. SW of Väjern. Stensholmen. Speed restriction.

From February 8, 2021 a speed restriction of five knots is in force between the mainland and the island Stensholmen.

Insert	5 kn	58-22,53N	011-15,00E
--------	------	-----------	------------

Bsp Västskusten N 2019/s26

Länsstyrelsen Västra Götalands län. Publ. 10 februari 2021

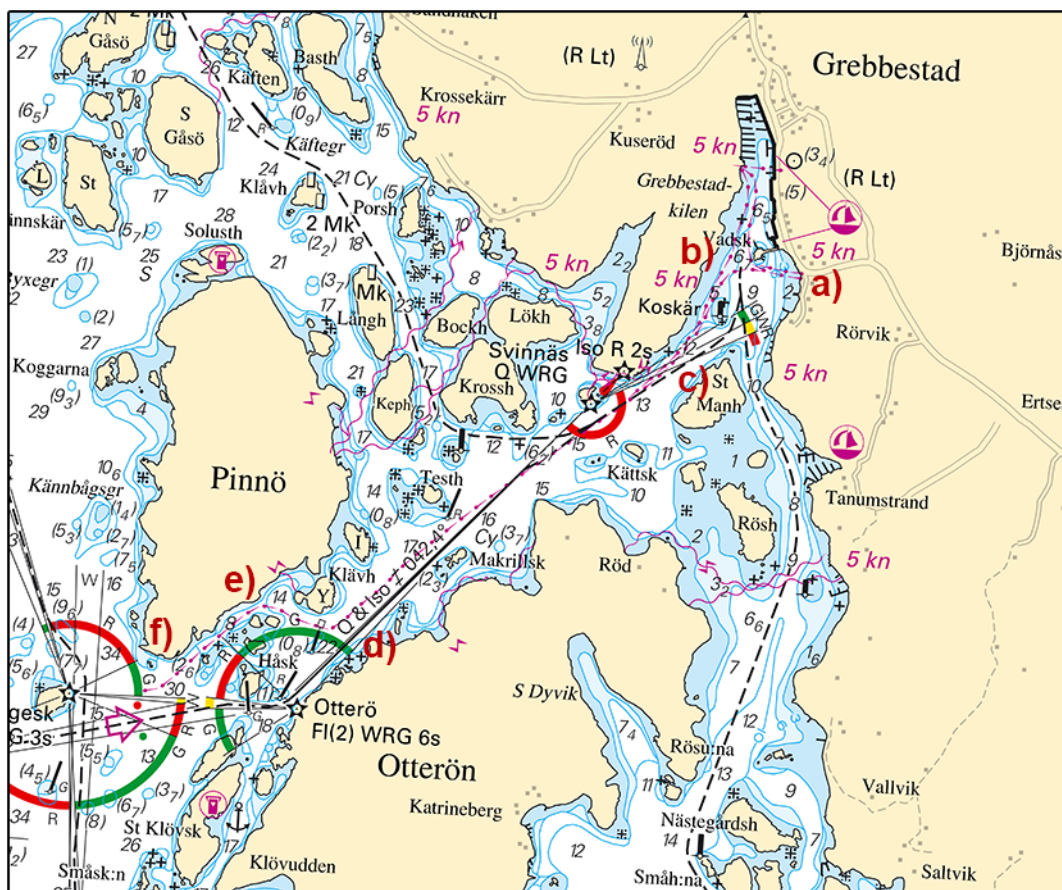
\* 15575

Chart: 934

Sweden. Skagerrak. Grebbestad. Pinnö. Otterön. Pipeline.

Insert	pipeline between a) - f)	a)	58-40,98N	011-15,55E
		b)	58-40,94N	011-15,14E
		c)	58-40,73N	011-14,93E
		d)	58-39,88N	011-13,08E
		e)	58-39,92N	011-12,65E
		f)	58-39,66N	011-12,10E

Bsp Västskusten N 2019/s11



Grebbestad. Pipeline

Tanums kommun. Publ. 8 februari 2021